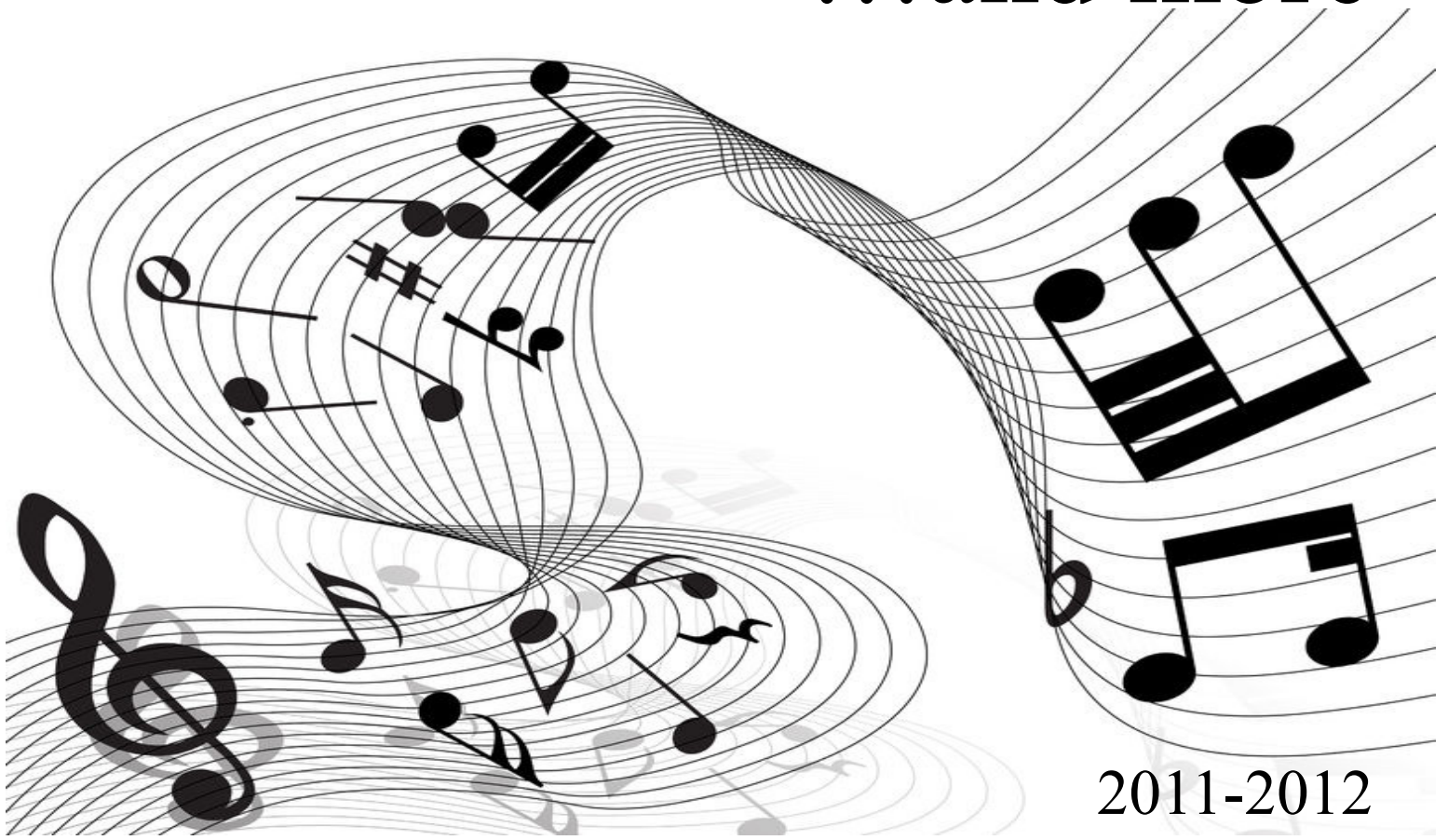




Band Orchestra Choir ...and more



2011-2012
Class Schedule
Enrollment Information
West Michigan Homeschool Fine Arts

Classes In Kalamazoo & Grand Rapids

This page intentionally left blank

What's New?

Kalamazoo: Intermediate Band/Orchestra has been added to the schedule

Grand Rapids: Boy's Choir and Girls Choir replaced with Jr. Choir and Sr. Choir; New Classes - Jr. Handchime Choir and Advanced Fiddle Class

Band Audition Prerequisites: Students must complete one year of previous level band before auditioning to advance to the next level

Pay by Credit or Debit Card: For your convenience you are now able to pay your class fees with a credit or debit card

Clarification on Class Fees: The full amount of the class fee is expected to be paid even if a student drops out before the end of the year

Check out the enclosed information to get all the details, times & locations

Important Information!

Welcome to WMHFA! We are excited in your interest to have your child learn music. Please read through this information thoroughly and feel free to contact the appropriate individual (listed on page 17) if you have questions.

Kalamazoo Audition Schedule – Auditions will take place on August 12 at the Bethel Baptist Church, 402 South Westnedge Ave., Kalamazoo. The auditions will be scheduled on a first come basis by appointment only (see class description for more details). If August 12 does not work for you or if the schedule is full, you may be assigned an alternate time earlier in July. **TIP: Get your audition request in right away!**

Grand Rapids Audition Schedule – Auditions will take place on August 3 at the Home School Building. The auditions will be scheduled by appointment only. If the date does not work for you or if the schedule is full, you will be assigned an audition on an earlier date. The goal is to have all auditions completed by August 3. Requests for auditions after August 3 may result in being placed in a lower level group. **TIP: Get your audition request in right away!**

Festival Participation & Full Year Commitment (for Grand Rapids students) – The upper level groups (*Advanced/Concert Bands, Symphony Orchestra, and Northern Lights Chorale*) are what we call “Festival Groups” These groups go to the MSBOA/MSVMA District Festivals and possibly to the MSBOA/MSVMA State Festivals. A lot of work goes into these festivals so we can do our very best. It is essential for every member and the parents of every member selected to be in one of these groups realize how vitally important every member is. Therefore, to become a member of one of these groups it will require the member and parents to make a commitment that, if chosen, they will not drop out but complete the full year and they will attend each festival the group performs in. Students who cannot make this commitment will be placed in a group that does not perform at festival.

Tentative Festival Calendar

District MSVMA Festival (Northern Lights Chorale) – February 4 or February 18

District MSBOA Festival (Bands & Orchestras) – February 22-24 or February 29-March 2

State MSVMA State Festival (Northern Lights Chorale) – April 13-14

State MSBOA Festival (Bands & Orchestras) – April 26-28 or May 3-5

Kalamazoo Polo Shirt Color Assignments – Students in Beginning Band/Orchestra will be assigned Royal Blue polo shirts. Intermediate Band/Orchestra will be assigned Maroon polo shirts. These shirts will be worn each week while at WMHFA. All other students may choose any color polo shirt that is available.

Grand Rapids Polo Shirt Color Assignments – Polo shirt colors are assigned to the Beginning and Intermediate level groups. Students in Beginning Band/Orchestra will be assigned Royal Blue polo shirts. Students in Intermediate Band/Orchestra will be assigned Maroon polo shirts. Students in Recorder Class and Elementary Choir will be assigned Royal Blue shirts (unless they are in Intermediate Band/Orchestra). All other students may choose any color polo shirt that is available.

Recycle Your Polo Shirts: In an effort to keep costs down to a minimum, polo shirts that will no longer be used may be returned so they can be reissued. Students need to be aware that they may not receive a brand new polo shirt every year. Thanks for your help and understanding in keeping costs down!

Concert Uniform – Students in the Beginning/Intermediate Bands/Orchestras, Recorder Class and Elementary Choir will wear dark blue or black skirts/pants with their assigned polo shirt to the concert performances. Specific details will be posted in the newsletter prior to the concert.

Contents

1. Purpose	4
2. Statement of Faith	4
3. About the Instructors	4
4. Class Descriptions.....	5-8
5. Enrollment Form.....	9-11
6. Location & Schedule	13
7. Requirements.....	14
8. Student Guidelines & General Rules	15
9. Dress Code	15
10. Q & A.....	16-11
11. Contact Directory	17
12. Marching Band Schedule	18
13. What Can Your Child Learn?.....	18

WMHFA Board of Directors

Rev. Scott March
President/Chairman

Mrs. Wendy March
Secretary-Treasurer

Mr. Otis Crawford
Director

Rev. Ken Ford
Director

Mr. Rick Poll
Director

Purpose

West Michigan Homeschool Fine Arts Association (WMHFA) is a non-profit organization whose purpose is to assist and support families in the musical education of their homeschooled children ages 8 and up. The motive behind this is to glorify God as we allow Him to create opportunities for our children to minister through music. As believers in God, we desire to be used by Him to create a thirst for righteousness as we minister before those who do not know Him. As we instruct and lead our children, God will increase their abilities to accomplish His purposes, bringing Him glory. The programs offered by WMHFA are not designed to meet all the musical educational needs of a child; rather they are intended to supplement the musical training received in home schooling.

Statement of Faith

WMHFA has a statement of faith that is reflected in its purpose as stated above. The statement of faith is not meant to exclude anyone from WMHFA; rather, it is presented so that anyone wishing to join will be aware of the tenets of the group. Along with our purpose, this statement of faith will serve as a foundation for harmonious unity, for mutual support, and for developing character in our children, which will be an outgrowth of their faith. Following is a summary of the Statement of Faith.

We Believe...

- The Bible is the inerrant, inspired Word of God.
- There is one God, who is eternally existent in three persons: God the Father, God the Son and God the Holy Spirit.
- Man, though created in God's image, has been separated from God by sin through birth and by choice (action).
- Jesus Christ came to earth to pay the penalty for our sins by His death on the cross
- God's love for mankind was the motivation for Christ to come and die for us.
- Salvation and eternal life are offered as a free gift to each person.
- Genuine trust in Christ will result in a commitment to Him, love for Him, and a desire to please God.

About our Instructors

- Mrs. Lori Beason, Director of the Elementary Choir and the Recorder Class, is a homeschool mom of 2 children, holds a BA degree in Vocal Music from Cornerstone University, and a BS degree in Music Education from Calvin College. Lori taught music for 10 years in schools and has been teaching private piano, voice and clarinet lessons for over 25 years. She credits her high school music teacher, Mr. Robert Stiles, for inspiring her to pursue music as a career.
- Mrs. Janice Carlson, Beginning Orchestra and Fiddle Class Instructor is active in her church's music and has participated in various orchestras and ensembles including Central Wesleyan Orchestra and Hammers and Strings Dulcimer Band. She is a private violin instructor and a 12 year home school veteran.
- Mrs. Karin Løberg Code, Orchestra Instructor, has been teaching strings in Kalamazoo for nearly twenty years. She teaches privately and is on the faculties at Portage Northern High School, Maple Street Middle School and Kalamazoo College. In addition to her teaching duties, Karin is a violist with several area orchestras and performs solo Norwegian folk violin around the country on her Hardanger fiddle. In 2010 Karin was awarded the PRISM Award for Excellence in Music Education from the Kalamazoo Chapter of SAI at WMU.
- Mr. Jared Hauck, Percussion Director, has been involved in percussion for over 10 years and has performed with 6 drumlines including World Championship Finalist, Great Lakes Percussion, ranked 10th in the world in 2007. He is currently instructing and/or arranging music for 9 indoor drumlines and marching bands. Jared has performed and studied music in 23 different countries and almost all U.S. states. He also gives private percussion lessons.

- Mrs. Sarah Karnes, Orchestra instructor, graduated from GVSU and received a BA with secondary teaching certification. She played with the West Shore Symphony of Muskegon for about 18 yrs in the violin section and also gives private lessons.
- Mrs. Beth Koster, Flute Choir Instructor and teaching private flute lessons. She has been teaching for over 20 years. She has served as Director of the High School Flute Ensemble of West Michigan, principal flute of the Kent Philharmonic Orchestra, Band director at Plymouth Christian Schools and Band assistant at Calvin Christian and Grandville Christian. She received her BA from Calvin College; MM in flute performance from MSU.
- Mr. Jared March, instructor of Beginning Band, Intermediate Band, Advanced Band-Kalamazoo, Advanced Band-Grand Rapids, grew up in WMHFA and graduated from Western Michigan University School of Music with a BA in Music Education. He teaches private lessons on brass and piano and plays keyboard on his church worship team.
- Mrs. Wendy March, founding director of WMHFA, instructor of the Beginning and Intermediate Bands, and Assistant Director of Northern Lights Marching Band, is a homeschool mom of 6 children with a BA degree in Secondary Music Education. She has been teaching and performing for over 30 years in choirs, orchestra, bands, private instruction and consulting. In 1996 she started WMHFA with the desire to provide homeschool students the opportunity to learn how to play musical instruments.
- Mr. Larry Moore, Home School Big Band instructor, earned a BA in Music Education from GVSU and a Masters of Music from WMU. He has been the director of Bands at Comstock Park Public Schools since 1985 where he runs the entire band program of the Middle School and the High School. He also directs an award winning High School Jazz Ensemble.
- Mrs. Brenda Rieger, Woodwind Ensemble instructor and MSBOA coordinator, is a homeschool mom of 9 children with a BS in Music Education from Olivet Nazarene University. She played clarinet with the Kankakee Symphony Orchestra for 15 years, taught public school music and choir for 4 years and teaches private clarinet and piano lessons.
- Mrs. Kristen Shoup, Director of Advanced Orchestra and Symphony Orchestra, earned a BA in Music Education from WMU and a Master of Music degree from the Eastman School of Music. She has been a member of the Grand Rapids Symphony Orchestra since 1992. Kristen has been the Orchestra Director of Grand Rapids Christian Schools, Calvin Christian Schools, and is the Assistant Director of the Grand Rapids Youth Symphony's Classical Orchestra.
- Mr. Robert Stiles, Director of Concert Band, Northern Lights Chorale, Senior Choir, and Marching Band, is a retired public high school music teacher. Mr. Stiles has taught both instrumental and vocal music throughout 36 years in public education. He holds a BS degree in Music Education from Olivet Nazarene University, Kankakee, Illinois and a Masters Degree in Instrumental Music from the University of Michigan.
- Mr. Rick Wiltse, Handbell Choir Director & Jr. Chimes Instructor, earned a BM from Alma College and a MM from Western Michigan University. He taught public school general and instrumental music for 15 years and is currently Director of Programming at Allegro School of Music in Grand Rapids. He has been involved with handbell choirs beginning in 1984 and is also an avid vocalist, trombonist, and electric bass player, having performed with numerous concert bands, big bands, praise bands, orchestras, and choirs.

BAND & ORCHESTRA BUDDIES—"BOBs"

The Buddy program matches experienced musicians in WMHFA with first year students for friendship and encouragement as they begin the adventure of learning to play an instrument. Watch for more information in October.

MSBOA Opportunities

WMHFA and its instructors are members of MSBOA. The Michigan School Band and Orchestra Association (MSBOA) is a professional association of over 1600 instrumental music teachers in over 1900 public, parochial, private and home schools in Michigan.

Through numerous student-oriented activities such as festivals, workshops, and teacher in-service functions, MSBOA strives to provide continual growth for instrumental music. Each year over 100,000 students in Michigan participate in MSBOA festivals, either individually or as a part of larger groups. The result noted has been higher musical standards of individuals and groups.

MSVMA Opportunities

WMHFA and its vocal instructors are members of the MSVMA. The Michigan School Vocal Music Association (MSVMA) is a non-profit professional organization of vocal music educators whose purpose is to improve, promote and assist vocal music education in the middle, junior high, and senior high schools of the state through a program of clinics, festivals, workshops, and conferences.

Class Descriptions

(Class Code is in Parenthesis)

Band



Beginning Band – (BB)

Taught by Mrs. Wendy March & Mr. Jared March

Cost: \$155/year

Tuesdays, 8:30-10:00 am - Kalamazoo

Wednesdays, 8:30-10:00 am – Grand Rapids

Beginning Band is for students with little or no musical training on a chosen instrument. To participate in Beginning Band, students must be at least 9 years old and attend a Music Guidance Survey and an Instrument Fitting. The **Music Guidance Survey** is a test to determine your child's musical aptitude. The **Instrument Fitting** is a time for your child to see and play all the different instruments that are available under the direction of trained personnel. With the information gathered at the Music Guidance Survey and Instrument Fitting, we are better able to determine what instrument your child would enjoy playing based on their aptitudes, abilities, and desire.

The Music Guidance Survey and the Instrument Fittings will be conducted at the Home School Building in Grand Rapids on June 29, July 13, and August 10. In Kalamazoo the Instrument Fittings will be held at Bethel Baptist Church on June 24, July 22 and August 12. The session will begin at 1:00 pm. Come to the session that best fits your schedule. (Session will last about 2 hours) *If you already have an instrument, please bring it to the fitting.*

Note: Beginning Band Percussion students must have at least 2 years experience on piano / keyboard within the past three (3) years. Piano audition is required including sight-reading.

Every effort is made to ensure your child's success. The Beginning Band is divided into instrument sections under the direction of qualified instructors. After a few months they will be able to play together as a collective band. The Beginning Band book, **Essential Elements 2000 - Book 1**, is very user-friendly to help the child "teach" himself. A CD is included for students to practice with a "full band" at home. Students will also practice using Smart-Music, an interactive computer program that makes practice rewarding and enjoyable. Every family enrolled in WMHFA will receive a subscription.

Required Materials: Instrument, Music Stand, Pencil, *Essential Elements 2000 – Book 1* (Book & music stand may be purchased from WMHFA)

ATTENTION PERCUSSION STUDENTS!

ALL percussion students are required to have a Mallet Kit. A Mallet Kit is a mallet bag with drumsticks, timpani mallets, yarn mallets and bell mallets. Mallet Kits are available for purchase from WMHFA or Meyer Music.

Intermediate Band – (IB)

Taught by Mrs. Wendy March & Mr. Jared March

Cost: \$155/year

Tuesdays, 10:10-11:40am - Kalamazoo

Wednesdays, 11:45 am - 1:15 pm – Grand Rapids

The Intermediate Band is open to students who have played at least one year on an instrument. Last year's WMHFA beginners will automatically qualify to be enrolled in the Intermediate Band unless changing to a new instrument. AN AUDITION IS REQUIRED FOR ALL **NEW STUDENTS** ENROLLING IN THIS BAND!

The prepared music for the Intermediate Band audition is on page 20 in *Essential Elements 2000, Book 2*, exercise #100, "Sight-reading Challenge". Students may also be asked to do sight-reading.

Percussion: prepared music for snare is on page 164 in *Essential Elements 2000, Book 1*, exercise #122, "Jumpin' for Joy". Students may also be asked to do sight-reading.

Auditions are by appointment only. To schedule an appointment, email your request to wmhfa@charter.net, please include the following information in your request for an audition: Student's name, parent's name, phone number, class name and location (Kalamazoo or Grand Rapids). If you do not have email: call (616) 794-2332.

Required Materials: *Instrument, Music Stand, Pencil, Essential Elements 2000 - Book 2* (Book & Music stand may be purchased from WMHFA)

Advanced Band – (AB)

Taught by Mr. Jared March Cost: \$155/year

Tuesdays, 11:50 am - 1:20 pm - Kalamazoo

Wednesdays, 11:45 am - 1:15 pm – Grand Rapids

The Advanced Band is open to students who have played at least two years on an instrument. AN AUDITION IS REQUIRED FOR ALL STUDENTS ENROLLING IN THIS BAND (Beginning Band students must complete Intermediate Band before auditioning for the Advanced Band).

Kalamazoo Advanced Band: *This class will be held if a sufficient number of students enroll in the class.*

Audition Required for Advanced Band Members: The Advanced Band audition music is on page 35 in *Essential Technique 2000* exercise #166, "Reading Skill Builder No. 9" plus the "Tonguing Exercise". Sight-reading is also required. Scores based on Tone, Prepared Music, Sight Reading, and the Tonguing Exercise. The "Tonguing Exercise" may be downloaded from our web site.

Percussion: Prepared music for snare is on page 35 in *Essential Technique 2000 (Book 3) exercise #166, "Reading Skill Builder #9"*, Plus: the "Tonguing Exercise for Percussion" (as fast as possible), AND 16 count snare drum roll *ppp* to *fff* back to *ppp* (<>) 1 beat per second. Sight-reading is also required. (Percussionist may be tested on tympani & keyboard later in the year)

Auditions are by appointment only. Kalamazoo auditions are August 12. Grand Rapids auditions are August 3. Appointments will be scheduled on a first come basis. To schedule an appointment, email your request to wmhfa@charter.net, please include the following information in your request for an audition: Student's name, parent's name, phone number, class name and location (Kalamazoo or Grand Rapids). If you do not have email: call (616) 794-2332. If you cannot make the scheduled audition date or if the schedule fills up, you will be scheduled for an earlier time.

Whole Year Commitment & MSBOA Festival Participation

Grand Rapids Advanced Band members in the 6th grade on up must commit to the whole year and commit to attend District MSBOA Festival (February 22-24 or February 29-March 2) and State MSBOA Festival (April 26-28 or May 3-5). Failure to complete the whole year or failure to attend Festival may result in losing chair position and/or not being accepted into a Festival group in the future.

Required Materials: *Instrument, Music Stand, Pencil, Essential Technique 2000(Book 3), black concert pants (boys) and white tuxedo shirt*

Concert Band – (CB)

Taught by Mr. Robert Stiles.

Cost: \$155/year

Wednesdays, 11:45 am - 1:15 pm – Grand Rapids only

The Concert Band, our highest-level band, is open to students who have at least three years experience AN AUDITION IS REQUIRED FOR ALL STUDENTS ENROLLING IN THIS BAND (Intermediate Band students must complete Advanced Band before auditioning for the Concert Band).

Audition Required for Concert Band Members: The Concert Band audition music is on page 35 in *Essential Technique 2000* exercise #166, “Reading Skill Builder No. 9” plus the “Tonguing Exercise”. Sight-reading is also required. Scores based on Tone, Prepared Music, Sight Reading, and the Tonguing Exercise. *The “Tonguing Exercise” may be downloaded from our web site.*

Percussion: Prepared music for snare is on page 35 in *Essential Technique 2000 (Book 3)* exercise #166, “Reading Skill Builder #9”, Plus: the “Tonguing Exercise for Percussion” (as fast as possible), AND 16 count snare drum roll *ppp* to *fff* back to *ppp* (<>) 1 beat per second. Sight-reading is also required. (Percussionist may be tested on tympani & keyboard later in the year)

Auditions are August 3 by appointment only. Appointments will be scheduled on a first come basis. To schedule an appointment, email your request to wmhfa@charter.net, please include the following information in your request for an audition: Student’s name, parent’s name, phone number, class name and location (Kalamazoo or Grand Rapids). If you do not have email: call (616) 794-2332. If you cannot make the August 3 audition or if the schedule fills up, you will be scheduled for July 20 or 27.

Whole Year Commitment & MSBOA Festival Participation

Grand Rapids Concert Band members in the 6th grade on up must commit to the whole year and commit to attend District MSBOA Festival (February 22-24 or February 29-March 2) and State MSBOA Festival (April 26-28 or May 3-5). Failure to complete the whole year or failure to attend Festival may result in losing chair position and/or not being accepted into a Festival group in the future.

Required Materials: *Instrument, Pencil, Essential Technique 2000(Book 3), black concert pants (boys), black bow tie (boys) and white tuxedo shirt*

Instrumental Ensembles – (IE)

Taught by various instructors

Cost: Free to enrolled band members

Wednesdays, 1:25-1:55 pm – Grand Rapids only

A variety of instrumental ensembles are available for those who desire a greater challenge and want to excel musically. The Ensembles also have greater opportunities to perform in public. The instrumental ensembles being offered are: Brass, Woodwind, Percussion and Flute. Members are chosen from those currently enrolled in band. Enrollment in these groups is by audition or invitation only. Availability will be announced in September.

Homeschool Big Band – (HBB)

Taught by Mr. Larry Moore

Cost: \$105

Wednesdays, 3:00 pm – 4:00 pm – Grand Rapids

This ensemble is patterned after the American Big Band tradition similar to the bands of the swing era such as Glenn Miller, Count Basie and Duke Ellington. Instrumentation is based around 5 saxophones, 4 trombones, 4 trumpets and Rhythm Section. The rhythm section consists of Bass, Piano, Drums and Guitar. Ideally the instrumentation should not exceed this. The group, however, can be successful with as little as 3 wind instruments and a Bass and Piano. Instrumentation is somewhat flexible. Players originally starting on flute or clarinet are invited to play saxophone, several arrangements have students “Doubling” on these woodwinds. Emphasis will be on learning the melody to several standard songs and learning to improvise stylistically around these melodies. Auditions will be during the first two rehearsals in the Fall. Black polo shirts required.

Performances will include all WMHFA concerts and various Jazz Festivals including MSBOA District and Regional Jazz festivals.

BAND & ORCHESTRA BUDDIES—”BOBs”

The Buddy program matches experienced musicians in WMHFA with first year students for friendship and encouragement as they begin the adventure of learning to play an instrument. Watch for more information in October.

Orchestra



Beginning Orchestra – (BO)

Taught by Mrs. Janice Carlson & Mrs. Karin Løberg Code

Cost: \$155/year

Tuesdays, 9:00-10:30 am - Kalamazoo

Wednesdays, 11:45 am-1:15 pm – Grand Rapids

Beginning Orchestra is for students with little or no musical training on a string instrument. To participate in Beginning Orchestra, students must be at least 8 years old and attend a Music Guidance Survey and Instrument Fitting Interview. **The Music Guidance Survey and Instrument Fitting Interview** is a time for your child to see and play all the different instruments that are available under the direction of trained personnel. With the information gathered at the Instrument Fitting Interview, we are better able to determine which instrument your child would enjoy playing based on their abilities, and desire.

The Music Guidance Survey and the Instrument Fittings will be conducted at the Home School Building in Grand Rapids on June 29, July 13, and August 10. In Kalamazoo the Instrument Fittings will be held at Bethel Baptist Church on June 24, July 22 and August 12. The session will begin at 1:00 pm. Come to the session that best fits your schedule. (Session will last about 2 hours) *If you already have an instrument, please bring it to the fitting.*

Every effort is made to ensure your child’s success. The Beginning Orchestra is comprised of the following instruments: Violin, Viola, Cello and String Bass. The Beginning book is very user-friendly to help the child “teach” himself. A CD is included for students to practice with at home. Students will also practice using SmartMusic, an interactive computer program that makes practice rewarding and enjoyable. Every family enrolled in WMHFA will receive a subscription.

Required Materials: *Instrument, Shoulder Rest, Music Stand*, Pencil, Essential Elements 2000 for Strings - Book 1* (Grand Rapids); Artistry in Strings – Book 1* (Kalamazoo). *Available from WMHFA*

Intermediate Orchestra – (IO)

Taught by Mrs. Sarah Karnes & Mrs. Karin Løberg Code

Cost: \$155/year

Tuesdays, 10:45 am - 12:15 pm – Kalamazoo

Wednesdays, 8:30 am - 10:00 am – Grand Rapids

The Intermediate Orchestra is open to students who have played at least one year on the following instruments: Violin, Viola, Cello and String Bass. Last year’s WMHFA beginners will automatically qualify to be enrolled in the Intermediate Orchestra unless they have changed to a new instrument. AN AUDITION IS REQUIRED FOR ALL **NEW STUDENTS** ENROLLING IN THIS ORCHESTRA!

Audition Requirements: The eight-minute audition will consist of two scales of your choice, a musical piece of your choice, and sight-reading provided at the audition.

Auditions are by appointment only. Kalamazoo auditions are August 12. Grand Rapids auditions are August 3. Appointments will be scheduled on a first come basis. To schedule an appointment, email your request to wmhfa@charter.net, please include the following information in your request for an audition: Student’s name, parent’s name, phone number, class name and location (Kalamazoo or Grand Rapids). If you do not have email: call (616) 794-2332. If you cannot make the scheduled audition date or if the schedule fills up, you will be scheduled for an earlier time.

Required Materials: *Instrument, Music Stand*, Pencil, Essential Elements 2000 for Strings - Book 2* (*Available from WMHFA)*

Advanced Orchestra – (AO)

Taught by Mrs. Kristen Shoup

Cost: \$150/year

Wednesdays, 8:30 am - 10:00 am – Grand Rapids only

The Grand Rapids Advanced Orchestra is open to students who have played at least two years on the Violin, Viola, Cello or String Bass (No Beginning Orchestra students). AN AUDITION IS REQUIRED TO ENROLL.

Audition Requirements: All Strings: page 37, *Essential Technique 2000 for Strings*, # 184, “Habanera” with repeats. Violins and Violas: page 21, *Essential Technique 2000 for Strings*, #116, “Dona Nobis Pacem”. Cellos and Basses page 27, *Essential Technique 2000 for Strings*, #137, “Simple Gifts”. The audition will also consist of 1 Major and 1 melodic minor scale of your choice (Students auditioning for Symphony must have C, G, and F Major and a, e, and d melodic minor, 3 octaves prepared), and a sight-reading provided at the audition.

Auditions are August 3 at the Home School Building by appointment only. Appointments will be scheduled on a first come basis. To schedule an appointment, email your request to wmhfa@charter.net, please include the following information in your request for an audition: Student’s name, parent’s name, phone number and class name. If you do not have email: call (616) 794-2332. If you cannot make the August 3 audition or if the schedule fills up, you will be scheduled for July 20 or 27.

Required Materials: *Instrument, Music Stand, Pencil, Essential Technique 2000 for Strings*

Symphony Orchestra – (SO)

Taught by Mrs. Kristen Shoup

Cost: \$150/year

Wednesdays, 1:25-2:55 pm – Grand Rapids only

This Orchestra is open to all experienced string students and advanced level wind and percussion instruments by audition only.

Audition Requirements: All Strings: page 37 *Essential Technique 2000 for Strings*, #184, “Habanera” with repeats. Violins and Violas page 21, *Essential Technique 2000 for Strings*, #116, “Dona Nobis Pacem”. Cellos and Basses page 27, *Essential Technique 2000 for Strings*, #137, “Simple Gifts”. Students need to have C, G, and F Major and a, e, and d melodic minor, 3 octaves prepared. Students will also be given a sight-reading. Wind and Percussion music is the same as Concert Band (see pg. 6).

Auditions are August 3 at the Home School Building by appointment only. Appointments will be scheduled on a first come basis. To schedule an appointment, email your request to wmhfa@charter.net, please include the following information in your request for an audition: Student’s name, parent’s name, phone number and class name. If you do not have email: call (616) 794-2332. If you cannot make the August 3 audition or if the schedule fills up, you will be scheduled for July 20 or 27.

Whole Year Commitment & MSBOA Festival Participation

Grand Rapids Symphony Orchestra members in the 6th grade on up must commit to the whole year and commit to attend District MSBOA Festival (February 22-24 or February 29-March 2) and State MSBOA Festival (April 26-28 or May 3-5). Failure to complete the whole year or failure to attend Festival may result in losing chair position and/or not being accepted into a Festival group in the future.

Required Materials: Instrument, *Essentials for Strings* and pencil

Fiddle Class – (FC)

Taught by Mrs. Janice Carlson

Cost: \$155/year

Wednesdays, 10:25-11:25 am – Grand Rapids

This class is open to all string players including violin, viola, cello and bass. The first semester will start with easier pieces. We will also work on playing with precision with some fiddling exercises. During the 2nd semester, we will progress to more difficult tunes, but simple enough to be accurate and capture the “fiddle feeling”. Different styles of fiddle will be played i.e. American, Irish, reels, hoedowns, jigs, and waltzes. The Fiddle Class is open to students who have played at least 2 years on their instrument (or completed one year of Intermediate Orchestra) and are able to play everything in *Essential Elements Strings Book 2*.

Advanced Fiddle Class – (AFC)

Taught by Mrs. Janice Carlson

Cost: \$155/year

Wednesdays, 3:00-4:00 pm – Grand Rapids

This class is open to all string players including violin, viola, cello and bass who are in Symphony Orchestra. The teacher will also graduate students from Beginning Fiddle Class to this class. We will work on playing faster with more double stops and other more advanced skills. We will play more difficult tunes, using different styles of fiddle. We will also take simple tunes and learn to “fiddle them up” on our own. This class will only be held if there is enough interest.

String Quartets – (SQ)

Cost: Free to Symphony Orchestra Students

Wednesdays – Grand Rapids

The String Quartet is open to those who desire a greater challenge and want to excel musically. Members are chosen from those enrolled in Symphony Orchestra. Enrollment is by audition only. Availability will be announced to the Symphony Orchestra students.

Choirs



Choir – (EC/JC/SC)

Taught by: Mrs. Lori Beason, TBA, Mr. Robert Stiles

Cost: \$105/year

Wednesdays, 10:25-11:25 am – Grand Rapids

Choir is a great way to expand your child's musical experience and make an instrumental musician even better. Students will enjoy singing interesting music that will be used to develop their voice to sing on pitch as well as develop musically by singing with dynamics and emotion. Students will also be exposed to fun and interesting breathing exercises, vocal warm-ups, number singing, vocal techniques and musical terms that will help your child to sing with musicality. The **Elementary Choir (EC)** is for children ages 7-10. The **Jr. Choir (JC)** for students ages 11-13. The **Sr. Choir (SC)** for students ages 14 and up. No audition is required.

Northern Lights Chorale – (NLC)

Taught by Mr. Robert Stiles

Cost: \$105/year (Free to enrolled choir members)

Wednesdays, 9:00-10:20 am – Grand Rapids

This talented group of 20 young men and ladies is available by audition only, taking place at the beginning of the school year. Several performance opportunities in addition to the Christmas and Spring concerts take place each year along with participation in the District and State MSVMA festivals. Students must be at least 14 years old to audition.

Northern Lights Chorale Audition Details – Chorale auditions will include singing the 1st verse of “America the Beautiful”, sight sing 4 measures, a rhythm exercise (clap 4 measures) and tonal memory (sing back 4 measures). Auditions will take place September 7 beginning at 8:30 am on a first come basis.

Required Materials: Tuxedo jacket for boys, uniform dress for girls

Color Guard (Grand Rapids)

Color Guard – (JG/MG/SG)

Instructor: TBA

Cost: Jr. Guard \$80;

Middle Guard \$105;

Sr. Guard \$155

Wednesdays: Jr. Guard: 1:30-2:00 pm

Middle Guard: 2:05-2:45 pm

Sr. Guard: 2:50-4:20 pm

Color Guard programs are available for girls ages 7-19. **Jr. Guard** is a beginning level guard (ages 7-10) where the students will learn basic hand flag choreography and beginning dance concepts. **Middle Guard** is an intermediate level guard (ages 8-12) where the students are ready for the challenge of learning 4' tall flag and more involved dance skills. **Sr. Guard** is an advanced level guard (ages 13-19) where students learn how to spin 6' tall flag and either rifle or sabre, along with challenging dance skills. All guards will perform short routines set to music showing all the skills they've learned during each session. *All girls are required to purchase a basic uniform top/pants and equipment.*

Miscellaneous Classes



Recorder Class – (RC)

Taught By: Mrs. Lori Beason

Cost: \$120/year

Wednesdays, 11:45 am – 12:45 pm

(Grand Rapids only)

Available to children age 7 and up, students will learn note recognition, rhythm and basic music theory. By the end of the year, they will be able to play both melody only and duet pieces. A new addition to recorder class this year will be the introduction of rhythm instruments to be used along with the recorder. The extent of rhythm instrument use in the class will be based on students' ability and the size of the class. Recorder, book and supplies are included in class fees.

Required Materials: Music Stand (*Recorder, Book and supplies included in the cost of the class*)

Handbell Choir – (HB)

Taught By: Mr. Richard Wiltse

Cost: \$105/year

Wednesdays, 10:25 - 11:25 am (Grand Rapids only)

The Handbell Choir is open to students ages 12 and up. Prospective members must be able to read music fluently and possess strong rhythmic skills. Prior experience with handbells is a plus, but not a requirement. Past experience with other types of musical groups is extremely helpful. Members will be taught basic handbell ringing technique and must demonstrate good ensemble skills and a willingness to work hard. As regular attendance of each member is crucial to the success of the group, only students who can commit to attending each rehearsal should audition for membership.

Jr. Chimes – (JHB)

Taught By: Mr. Richard Wiltse

Cost: \$105/year

Wednesdays, 11:30 - 12:30 pm (Grand Rapids only)

The Jr. Chimes Choir is open to students ages 8-11. Handchimes have a beautiful sound, are easy and fun to play, and are a great tool for learning the techniques of ringing handbells. Music reading skills and prior musical experience are helpful, but not required for participation. Students in this class will also spend a small amount of time ringing handbells. This is a great way to develop and sharpen music reading skills and musicianship!

Marching Band (summers only)

Taught by Mr. Robert Stiles, Mrs. Wendy March

Cost: \$130 (Cost includes Band Camp and fees.)

Northern Lights Home School Marching Band is an exciting opportunity for WMHFA students to let their "Light" shine before thousands of people each year. The Marching Band season begins with one week of band camp (day camp) and continues through the summer months. Students meet weekly on Wednesday mornings to rehearse for the parades they will be performing in. To participate in Marching Band in the summer, students must be enrolled in the previous Concert Season. This band is available for ALL Band students who memorize the music and can march the routine while playing.

Social Hall

Many students may have to wait quite a while between classes or have to wait for a sibling to finish classes; therefore we provide a Social Hall to assist in keeping them occupied. We will have many students using the buildings every week and have found it necessary to have all students in a class, Study Hall or Social Hall to maintain order. Students will not be permitted to roam the facilities, inside or outside, unsupervised. The Social Hall is supervised.

The Social Halls are for conversation, game playing and occasionally a video. It is not for loud, obnoxious behavior or roughhousing.

Study Hall

There will be a room available all day as a Study Hall for families waiting on students participating in classes. Parents are free to bring their children into the Study Hall and do schooling with them. This will be a quiet environment for you to get work done rather than spending so much time traveling back and forth.

Private Instruction

Private instruction is offered throughout the day on various instruments depending on room availability. Sign-ups take place in the fall on a first-come basis.

Nursery for Instructors & Volunteers

A staffed Nursery is available for instructors and volunteers who are working for WMHFA. If you are remaining at the building during your child's class, please keep your non-students with you at all times. **PLEASE DO NOT USE WMHFA AS A DAY CARE PROVIDER!** Non-students must be under the direct supervision of a parent at all times.

Nursery for Parents

Nursery facilities are available for parents of small children waiting on students participating in classes. The Nursery is not staffed; therefore all children using the Nursery must be accompanied by their parent or responsible adult.

PLEASE DO NOT DROP YOUR CHILDREN OFF AND LEAVE THEM. WMHFA is not responsible for the care of children left alone at the building.

Introducing SmartMusic

*SmartMusic is award-winning learning software with the power to transform music learning. Students of all ages and skill levels can play or sing with professional accompaniments, making practice both rewarding and fun. An affordable subscription to SmartMusic gives students the opportunity to explore a wide variety of music from the world's largest accompaniment library featuring thousands of titles for band and orchestra, solo contest repertoire, popular method books, and skill-building exercises. **How it works:***

1. Teacher sends assignments

After the weekly rehearsal, the band director will send out the week's assignments to SmartMusic. Students login to SmartMusic to practice.

2. Students practice with the computer

SmartMusic listens as a student practices and gives constant feedback on how well they play. SmartMusic then scores and sends a recording to the teacher.

3. Teacher Evaluation

Director reviews recordings and grades student progress.

Every family enrolled in WMHFA will receive a SmartMusic subscription.

**West Michigan Homeschool Fine Arts
2011/2012 Enrollment/Agreement Form**

Parent's Names: _____

Street: _____ City: _____ Zip: _____

Phone: _____ Unlisted e-mail: _____

Dad's Cell Phone: _____ Mom's Cell Phone: _____

Please check the location you are enrolling for: Kalamazoo Grand Rapids

Please list below each student you are enrolling and put the CLASS CODE (initials) of the classes being enrolled in. (see example)

Student's Name	Shirt Size+	Shirt Color+	Birth date	Gender	Graduating in 2012?	Instrument	Class 1	Class 2	Class 3	Class 4	Class 5
(Example) John	AS	B	11/1/97	M		Trumpet	JC	CB	SO		

+Leave the Shirt columns blank if you do not need a polo shirt

Shirt Sizes: Youth – YS, YM, YL Adult – AS, AM, AL, AXL, AXXL, AXXXL

Shirt Colors: Royal Blue (RB), White (W), Black (B), Maroon (M), Pink (Pk), Light Blue (LB), Red (R), Purple (P-Adult sizes only)

Volunteer Preference: I will sign up by Sept 21 I will pay \$150 instead of working

To calculate the cost for the year, fill in the number (#) of students you have in each class (a maximum charge of 3 per class). Total the amounts and include a check or money order with the Enrollment Form.

Class	Cost		#		Total
Non-Volunteer Fee	\$150	X	1	=	
Band	\$155	X		=	
Orchestra	\$155	X		=	
Choir	\$105	X		=	
Jr. Guard	\$80	X		=	
Middle Guard	\$105	X		=	
Sr. Guard	\$155	X		=	
Home School Big Band	\$105	X		=	
Recorder Class	\$120	X		=	
Fiddle Class	\$155	X		=	
Handbell/Jr. Chimes Choir	\$105	X		=	
Total Class Fees for Year					
Annual Enrollment Fee¹	\$50	X	1	=	\$50.00
Late Enrollment Fee²	\$25	X	1	=	
Total Amount Due					

We are paying in full. Enclosed with the Enrollment Form is a check or Credit Card information for the Total Amount Due WMHFA.

We will make payments. Enclosed with the Enrollment Form is a check or Credit Card information for the Enrollment Fee (\$50/\$75*) plus a payment toward our Class Fees. We will pay 50% of the Class Fees by September 7, 2011 and will pay the remaining 50% by December 14, 2012.

Minimum Payment Due	\$50/\$75*
Amount Paid on Class Fees	
Total Amount Paid	
Check #	

* \$50 if sent by August 12 / \$75 if sent after August 12
Make checks payable to WMHFA

CREDIT CARD INFORMATION

CREDIT CARD: VISA MASTER CARD DISCOVER **CREDIT CARD #:**

--	--	--	--	--	--	--	--	--	--	--	--	--	--	--	--	--	--	--	--

Expiration Date: ____ / ____ Amount: \$ _____ Cardholder Signature _____

AGREEMENT OF RELEASE/FAMILY AGREEMENT

Agreement of Release

The undersigned family or family member(s) will be a participant in the West Michigan Homeschool Fine Arts program being conducted weekly during the 2011-2012 school year (September 1, 2011-August 31, 2012) at the Home School Building, 5625 Burlingame Ave. SW in Wyoming, Michigan or Bethel Baptist Church, 204 South Westnedge Ave., Kalamazoo.

In consideration of participation by the undersigned in West Michigan Homeschool Fine Arts, the undersigned hereby releases West Michigan Home School Fine Arts Association, Inc., West Michigan Homeschool Fine Arts, Northern Lights Home School Marching Band, and its affiliates, employees, and agents from any responsibility or liability if any of family members incur any injury, illness or damage to personal property while participating in the program.

We hereby release, hold harmless and indemnify the West Michigan Home School Fine Arts Association, Inc.; West Michigan Homeschool Fine Arts; Northern Lights Home School Marching Band; its affiliates, employees, agents and any sponsors of the program against any and all liability costs and expenses arising in any way as a result of the undersigned family's participation in the West Michigan Home School Fine Arts program.

The undersigned agrees to be legally bound hereby.

Family Agreement

- We have read the information, we understand all that is expected and required of families and students. By signing below, we are agreeing to abide by these expectations and requirements.*
- We understand a student with behavior problems or who is out of harmony with the spirit of the program may be dismissed from the program.*
- We understand that by enrolling in WMHFA we are required to pay for the full year of class fees even if we withdraw or are dismissed*
- Yes! We are stating our commitment to attend District and State Festivals if we are enrolling in Advanced Orchestra, Symphony Orchestra, Advanced Band or Concert Band (does not apply to 5th grade students or younger). (See class description before you check the box)*

SIGNATURE: _____ DATE: _____
(Must be signed by Parent or Legal Guardian)

SIGNATURE: _____ DATE: _____
(Must be signed by Parent or Legal Guardian)

Student Signature _____ Student Signature _____

Student Signature _____ Student Signature _____

Student Signature _____ Student Signature _____

Please complete ALL 3 pages of the Enrollment Form and mail with your payment to:

**WMHFA
7921 Whites Bridge Rd.
Belding, MI 48809**

2011-2012 WMHFA Volunteer Survey

Please circle the department you are willing to work in. Please note: Approximately **14 times (about 1½ - 2 hours each time)** per family is needed to operate WMHFA in an efficient manner. We will also have a sign up book available for you to sign up for a work responsibility time slot to last through one of the two semesters. This survey will help us in assigning you a responsibility that will match your interest with your availability.

Various Cleaning Jobs

Floater (Be available wherever needed when there is a shortage of workers)

Fund-Raising (Distributing sale items & Collecting Funds)

Information Table (Collect Payments, Sell Supplies, Make Copies, etc)

Lunch/Kitchen

Nursery Attendant

Resource Center (Assist Librarian or Monitor Students) – Grand Rapids Only

Social Hall Monitor

I am willing to make a **YEAR LONG COMMITMENT** in the following area

_____ Helping an instructor (please list your class preference _____)

_____ Set up Social/Study Hall and Band/Orchestra/Choir rooms (be at the building by 8:00 am each week)

_____ Decorate the bulletin board (monthly) – Grand Rapids Only

_____ Filing Music as needed

_____ Uniform Management (issuing uniforms and managing the uniform inventory) – Grand Rapids Only

_____ Coordinate a small group of volunteers (e.g. Social Hall or Nursery or Cleaning, etc.)

_____ Set up kitchen on Tuesday night – Grand Rapids Only

I will not be volunteering and will pay the Non-Volunteer Fee of \$150

Name _____

Phone: _____ Email: _____

Classes your children are enrolled in: _____

Important Reminder! Please send this form with your Enrollment Form. All non-volunteers will be charged \$150.

Grand Rapids questions? Please contact Kathy Carabellese at carabellesequiver@juno.com or at (616)531-1977

Kalamazoo questions? Please contact Scott & Wendy March at wmhfa@charter.net or (616)794-2332

Please complete ALL 3 pages of the Enrollment Form!

THIS PAGE IS INTENTIONALLY LEFT BLANK

Kalamazoo Location & Schedule Overview

WMHFA Kalamazoo meets weekly on Tuesdays at Bethel Baptist Church, located at 402 South Westnedge Avenue, Kalamazoo

Fall Session is September 6 through December 13 - **Spring Session** is January 3 through April 17
Tentative dates (subject to auditorium availability) for **Concerts** are December 13 & April 17

Below is a schedule overview of all Kalamazoo classes offered in 2011-2012

Time	BANDS	ORCHESTRAS
8:30am	Beginning Band 8:30-10:00	Beginning Orchestra 9:00-10:30
10am	Intermediate Band 10:10-11:40	Intermediate Orchestra 10:45-12:15
11am	Advanced Band 11:45-1:15	
12pm		
1pm		

Grand Rapids Location & Schedule Overview

WMHFA meets weekly on Wednesdays at the Home School Building (HSB), located at 5625 Burlingame Ave. SW in Wyoming.

Fall Session is September 7 through December 14 - **Spring Session** is January 4 through April 18
Tentative dates (subject to auditorium availability) for **Concerts** are December 15 & April 19, 23, 24

Below is a schedule/class location overview of all Grand Rapids classes offered in 2011-2012

(G-Gym FR-Family Room #-Classrooms)

Time	BANDS	ORCHESTRAS	CHOIRS	COLORGUARD (GYM)	MISC. CLASSES
9am	Beginning Band (2) 8:30-10:00	Intermediate Orchestra (11) Advanced Orchestra (FR) 8:30-10:00	N. L. Chorale (9) 9:00-10:20		
10am					
11am		Beginning Fiddle Class (9) 10:25-11:25	Elementary Choir (5) Jr. Choir (2) Sr. Choir (FR) 10:25-11:25		Handbell Choir 10:25-11:25 (13)
12pm	Intermediate (2) Advanced (FR) Concert Bands (G) 11:45-1:15	Beginning Orchestra (11) 11:45-1:15			Jr. Chimes (13) 11:30-12:30 Recorder Class (5) 11:45-12:45
1pm					
2pm	Ensembles (various) 1:25-1:55 Drum Line 1:25-2:25	Symphony Orchestra (2) 1:25-2:55		Jr. Guard 1:30-2:00 Middle Guard 2:05-2:45	
3pm		Advanced Fiddle Class (9) 3:00-4:00		Sr. Guard 2:50-4:20	Big Band (4) 3:00-4:00
4pm					

Requirements

Homeschool Students Only

To be a member of WMHFA, a student may not be enrolled in any public, private, charter or Christian school. They must be home educated under the direct supervision of their parents in at least four of the seven core academic subjects in a given semester.

Age

WMHFA is for all homeschool students between the ages of 8 to 19. The exceptions are for Jr. Colorguard (7 & up), the Recorder Class (7 & up) and Children's Choir (7-9).

Daily Practice

Daily Practice is required of all band, orchestra and colorguard members. Beginning Band/Orchestra students will be required to practice at least 5 days a week, 15 minutes a day, gradually being increased by the director to 30 minutes a day. All other band/orchestra students will be required to practice for at least 30 minutes a day, 5 days a week. Weekly practice records must be signed by parents and turned in every Wednesday. If a student does not practice, they may have their seating changed, be placed in a lower band or dismissed from the class. Colorguard practice requirements will be discussed at the first week of class.

Attendance

Students are expected to attend all rehearsals and performances. Students are required to attend the rehearsal prior to a performance and all performances. Students missing more than two rehearsals within a concert period or missing a rehearsal prior to a performance may have their seating changed or be denied permission to perform.

Uniforms

Families will be responsible for the purchase and upkeep of the basic concert uniform (pants/skirts and shirts). WMHFA will be responsible for the purchase of all accessories necessary to complete the uniform (e.g. Advanced/Concert Band skirts, cummerbunds for concerts; uniform top, hats, and gloves, etc., for Marching Band). These accessories are the property of WMHFA and will be on loan to the students. All items owned by WMHFA must be returned in good condition. An item is not in good condition if it cannot be used and look nice in the following season. The person who checks out items owned by WMHFA will be financially responsible for each item missing or not returned in good condition.

Concert uniform:

Choirs, Beginning & Intermediate Bands/Orchestra: black or navy pants (boys)/mid-calf skirt(girls), polo shirt, dark shoes

Chorale, Advanced & Symphony Orchestra boys, Advanced & Concert Bands: black dress pants/uniform skirt, white tuxedo shirt**, dark shoes, black bow tie for boys and cummerbund (provided)

Advanced & Symphony Orchestra girls: All black including black socks and black shoes.

Marching Band: black uniform pants*, uniform shirt, black shoes, cummerbund, white gloves, hat

Colorguard Uniform: (See handout provided to all colorguard Students concerning uniforms & equipment.)

*Marching Band students will be required to purchase black uniform pants and shoes. Prices are \$25-30 and may vary according to supplier. Ordering for uniform pants and shoes will take place in the spring. There will be used uniform sales each Spring.

**White tuxedo shirts with stand-up collar or wing collar.

Fees

A Family Enrollment Fee of \$50 is due with the Enrollment Form. A late fee of \$25 will be charged for Enrollment Forms postmarked after August 12. The Enrollment Fee is non-refundable

The Class Fees may be paid in full upon enrollment or may be paid by using the following payment plan: 50% of Class Fees paid by September 7, 2011; 100% of Class Fees paid by December 14, 2011. If there are special circumstances that may cause your payment to be late, please contact us to make arrangements. **Note: If you drop a class, you are required to pay the balance of your tuition.** (See "Questions & Answers"- page 17 for more information)

To keep the program affordable for all, families with more than three students enrolled in a class will only be charged for three enrollments per class. (See Q & A's and the Enrollment Form for more information).

A Late Fee of \$5 per month will be charged for Class Fees not paid in full by the due date. Unpaid Class Fees may cause your child to be dropped from the class or prevent participation in a concert. Again, if there are special circumstances that may cause your payment to be late, please call and make arrangements.

Requests for Refunds must be in writing and follows this schedule:

75% refunded after 9/7/11
50% refunded after 9/14/11
25% refunded after 9/21/11
No refunds after 9/28/11

Concert Fees of \$3/seat will be charged to cover the cost of auditorium rental. Tickets go on sale several weeks prior to the concert.

Parental/Family Involvement

Due to the number of students involved and a desire to keep the cost of our programs reasonable, we find it necessary to require all families to be involved in the operation of the WMHFA. Approximately **14-15 times (about 1½ hours each time)** per family is needed to operate the program in an efficient manner.

A detailed list of jobs and times will be available at instrument fittings, auditions, marching band, and at the Information Table throughout the summer and during the month of September. There are certain jobs or times of the day that are harder to fill than others. In other words, please try to sign up for these jobs to make sure we fill the schedule.

Please sign up as soon as possible so we can have the fall session filled by September 9. You may also sign up by contacting Kathy Carabellese at carabellesequiver@juno.com or if you do not have email you may call (616) 531-1977. We need all families to respond by September 22 to have the whole year scheduled.

If you are healthy but too busy to help, you will be charged \$150 per year to be of help in a different way. Please be sure to indicate this by checking the box on the Enrollment Form.

Private Lessons

Private lessons may be offered during the day at the Home School Building for a variety of instruments. Private lessons ARE NOT a requirement to be in WMHFA but are strongly encouraged. A student who receives individual instruction will generally progress faster than those who do not.

Student Guidelines and General Rules

Rules

WMHFA has student guidelines and rules that every student is expected to follow. The guidelines and rules can be found below. Every student that is enrolling in WMHFA must sign an agreement on the Enrollment Form stating that they will abide by the rules.

As Christians, our goal should be to obey Scripture and, whether in word or deed, to do all to the glory of God. Since the ultimate end of all Bible-centered education is to grow in wisdom and virtue, we require all our students to exhibit the following minimal personal virtues:

- Kindness
- Truthfulness
- Courtesy toward others and respect for their property rights
- Punctuality in attendance and work
- Respect for and obedience to those in authority
- Diligence in effort and attention

Performance Information

- Students must arrive in FULL DRESS with all necessary equipment.
- Brightly colored lipstick and nail polish is not permitted.
- Uniforms **must** be clean and pressed.
- Shoes **must** be clean and polished.
- Students may not eat or drink anything other than water before performances while wearing their uniforms.

Instrument Code

- Students should never play another student's instrument.
- Students other than the drummers should never touch the percussion equipment.
- Students other than colorguard should never touch the colorguard equipment.
- Parents are financially responsible for repairs to and upkeep of instruments loaned to their child by the band.

Building Code

The atmosphere of our building must be one of order, discipline, and cooperation. No running or roughhousing will be permitted. Absolutely no food, drink or gum will be allowed outside of designated areas. Boom boxes or personal media players are not allowed. Please remember we are guests at the Home School Building. Let's work together to leave the building in as good, or better, condition than we found it.

Drugs and Weapons

No harmful substances will be allowed in or around the Home School Building. This includes alcohol, cigarettes, or drugs. Bringing anything to the Home School Building that is usually thought of as a weapon or anything that could be used as a weapon is prohibited. This includes pocket knives.

Parental Supervision is required for all children not attending classes. If you must stay during class time, there will be designated areas available for you to take your children. There are to be no children running around inside or outside the facilities at any time. Please pick your children up as soon as their class is over. WMHFA is not set up to be a day care provider. We barely have room for all the students that must be here.

Dress Code

As a Christian educational organization, we have a responsibility to create an atmosphere, which enhances and adheres to the purposes we have established. Student appearance should be modest and in good taste so as not to offend or draw undue attention to oneself. The neat appearance of our students helps to create a positive learning environment and reflects the philosophy and standards of WMHFA.

*"Let your moderation be known unto all men. The Lord is at hand."
- Philippians 4:5*

The following dress code requirements assist in achieving the goals mentioned above.

Shirts – All students will be required to wear a WMHFA issued polo shirt. All boys shirts must be tucked in. The cost of the shirt is included in your enrollment. Additional shirts may be purchased for \$15.

Pants/Slacks – Dress or casual pants only. Pants must be neat, and not torn, ragged or faded. They should be of the correct size, not too tight or too baggy and must fit at the waist. No "jean" styles, denim fabric, hip-huggers, tight or sagging pants. (Jeans may be worn during Marching Band)

Shorts – The length of shorts must not be higher than three inches above the floor when kneeling. Shorts must be neat, and not torn, ragged or faded. They should be of the correct size, not too tight or too baggy, and must fit at the waist. No "jean" styles, no denim fabric, and no athletic shorts except during Marching Band.

Skirts – The length of skirts, including slits, must cover the knee or be longer. Skirts must be neat, and not torn, ragged or faded. They should be of the correct size, not too tight, and must fit at the waist. No "jean" styles, hip-huggers, or tight skirts.

Sweaters/Sweatshirts – Sweaters and Sweatshirts must be modest, loose fitting not oversized. Sweatshirts may only be WMHFA related. There must be a tucked in WMHFA polo shirt beneath sweaters or sweatshirts.

Color Guard – Modest, loose fitting "home school" T-shirts tucked into modest, loose fitting athletic pants. Shirt must not come untucked when arms are raised above the head. This clothing is permitted **only** during Color Guard rehearsals. If Color Guard students are at the building outside of class, they must change into appropriate clothing.

Hats – Caps, hats, bandanas, dew rags, sunglasses, etc. may not be worn in the building.

Jewelry/Hair – No earrings, chains, necklaces, bracelets, nail polish, feminine make-up or excessive/unusual dyed hair on boys. No body piercing jewelry or exposed tattoos. Faddish, radical or unkempt hairstyles are to be avoided. Boy's hair may be half-way over the ear and no longer than collar-length.

Violations – Students violating the Dress Code will not be allowed to attend classes or other functions. Unless otherwise approved, this policy will be in effect during all WMHFA activities.

Students, parents and teachers who have questions about the specific guidelines should check with the Administrator. It is the responsibility of the Administrator to determine what is permissible.

Conduct

This code of conduct will be enforced before, during, and after band anywhere on the property in which the band practices. The following behavior will result in immediate disciplinary action:

- Foul language or unwholesome talk (Eph. 4:29)
- Roughhousing
- Disruptive behavior during rehearsals
- Physical display of affection
- Disrespect for those in authority
- Drugs and/or weapons
- All other inappropriate behavior as deemed by the director

Damage done to the facility or its equipment will be the financial responsibility of the people involved in causing the damage.

Violations

The Executive Director and instructors are free to discipline, as deemed fit for each offense, but in most cases will use the following guidelines. If the guidelines and general rules are violated, a verbal warning will be given to the student, and the parents will be contacted to inform them of the violation. A record will be kept of the verbal warning. On the second violation, a written notice will be sent home to the parents and they will again be contacted. A student with a second violation may be dismissed from current or next rehearsal or performance. If there is a third offense, the student may be dismissed from WMHFA for the remainder of the season.

Students may be immediately dismissed without warning for gross infractions such as fighting, using illegal substances, or immoral behavior.

Dismissed students that desire to reenroll in the program must meet with parents and Executive Director to determine if reenrollment is allowable.

Questions & Answers (Q & A)

Q: What are all the costs involved in being in the Band Program?

A: *The Cost Calculator below should give you a very good idea of the costs involved. To help keep the cost affordable for everyone, families do not pay for more than three students per class. If you have more than three students enrolled in a class, calculate the costs for three students only.*

Estimated WMHFA Cost Calculator	Cost		# Students		Totals
1. Annual Enrollment Fee per family (non-refundable)	\$50.00	X	1	=	\$50.00
2. Instrument Rental or Purchase (contact music store)		X		=	
3. Music Stand & Carrying Case (available from WMHFA)	\$18.00	X		=	
4. Band Book (available from WMHFA)*		X		=	
5. Class Fees (3 student maximum charge per family/per class)					
Band (Beginning, Intermediate, Advanced, & Concert)	\$155.00	X		=	
Orchestra (Beginning, Intermediate & Symphony)	\$155.00	X		=	
Choir	\$105.00	X		=	
Jr. Guard	\$80.00	X		=	
Middle Guard	\$105.00	X		=	
Sr. Guard	\$155.00	X		=	
Home School Big Band	\$105.00	X		=	
Recorder Class (includes Recorder, book & supplies)	\$120.00	X		=	
Fiddle Class	\$155.00	X		=	
Handbell Choir/Jr. Chimes	\$105.00	X		=	
6. Non-Volunteer Fee	\$150.00	X	1	=	
7. Late Enrollment Fee (postmarked August 12 th or after)	\$25.00	X	1	=	
8. Concert Tickets/each seat (to cover cost of auditorium rental)	\$3.00	X			
Total Cost for the Year					

*Beginning Band Book-\$9.50; Beginning Band Percussion Book-\$16.00; other band books-\$7.50.
(Prices of supplies are subject to change)

Q: What if the total cost for the semester is too much for me to pay all at one time. Can I make payments?

A: *Yes. The Class Fees for the Semester may be paid weekly, monthly, or by the semester. 50% of the Class Fees are due by September 7, 2011, and the remaining 50% of the Class Fees are due by December 14, 2011. ** However, the Annual Enrollment Fee is due with your registration, and all supplies are "cash & carry". If you withdraw or your child is dismissed, you are required to pay the balance of your tuition.*

*****A \$5 per month late charge is added after the second Wednesday of each month. In the event of a bounced check, bank charges will be passed on and all future fees must be paid with a money order.***

Q: Do previously enrolled families need to enroll again?

A: *Yes. Each enrollment session begins in September and ends in August. To begin a new session requires enrollment.*

Q. Why do I have to commit to the whole year and pay for it even if I drop out?

A. We require that you seriously consider whether or not your students should be involved in WMHFA each year. We consider music education to be of great value and importance, on a par with all other academic subjects and sports programs and hope that you will give this program the serious commitment it deserves. We know that there are special circumstances which may cause you to have to leave the program so for that reason there are a few exceptions to this policy:

- *Serious illness in the immediate family*
- *Death or unemployment of a parent*
- *Family moving more than 50 miles from WMHFA*
- *NO exceptions are made for students who tire of the program, re-enroll in school, or who don't want to practice.*

We have made commitments to our directors and their salaries continue, even if your student does not.

Q: Where can I get the supplies needed for my child to be in the program?

A: For your convenience, many of the supplies regularly needed by students are available for purchase from WMHFA at the Information/Supply Table. These include items such as valve oil, slide/cork grease, reeds, books, music stands, etc.

Q: How does WMHFA communicate to all the families in the program?

A: To keep families informed of what is happening at WMHFA, a weekly newsletter is published. You can receive your newsletter by email or pick it up at the on class days. Newsletters will not be mailed out.

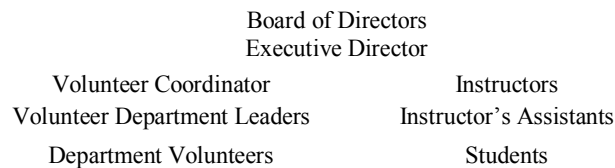
Q: I have more than 3 children enrolling in band. How does having more than 3 children enrolled qualify for a discount?

A: If you have more than three children enrolled in the same class (e.g. Band), you do not pay for more than three children. However, if you have three children enrolled in one class and another child enrolled in another class, then you would not qualify for the discount. See the cost calculator at the beginning of the "Questions & Answers" section for the list of classes.

Q: How do we handle a complaint? What is the procedure for solving a problem?

- A: 1) Go to the person directly involved in the problem (e.g. volunteer worker, instructor, or administrator) please do not complain to people not involved, it only breeds more complaining, negative, critical attitudes and makes things seem bigger than they really are. Calmly explain your position, seek for peaceful resolution.*
- 2) If going to the person responsible does not solve the problem, go to the person responsible for that individual (volunteer department leader, instructor, or administrator). Again calmly explain your situation to this person in charge. Work together on a solution*
- 3) If going to the person in charge does not solve the problem, go to the executive director.*

WMHFA Flow Chart



Q: Who do we contact if we have more questions about WMHFA?

A: It all depends on what your question is. Please see the list below to find the correct contact person. Due to the potentially heavy call volume, please make your contact by email if possible. If you do not have email, please feel free to call on the phone.

- Auditions – Mr. & Mrs. March wmhfa@charter.net , or (616) 794-2332
- Beginning/Intermediate Band Grand Rapids – Mrs. Wendy March, swmarch@charter.net , or (616) 794-2332
- Beginning/Intermediate/Advanced Band Kalamazoo – Mr. Jared March, jaredmarch@gmail.com, or (269)910-0404
- Grand Rapids Orchestras – Mrs. Kristen Shoup, via_05@hotmail.com, or (616)248-0005
- Recorder Class – Mrs. Lori Beason, trbeason@juno.com, (269)694-9395
- Elementary Choir – Mrs. Lori Beason, trbeason@juno.com, (269)694-9395
- Color Guard – WMHFA, wmhfa@charter.net , or (616)794-2332
- Fiddle Class – Mrs. Janice Carlson, joyfulnoise001@yahoo.com , or (616)607-9315
- Grand Rapids Volunteers – Mrs. Kathy Carabellese, carabellesequiver@juno.com , or (616)531-1977
- All other questions – wmhfa@charter.net , (616) 794-2332

Northern Lights Marching Band - 2011 Parade Schedule

June 10	Battle Creek Cereal Festival Parade	6:00 pm
June 16	Three Rivers Water Festival Parade	7:00 pm
July 4	Philadelphia Independence Day Parade	11:00 am
July 23	Ionia Free Fair Parade	11:00 am
August 6	Coast Guard Festival Grand Parade – Grand Haven	12:00 pm

What can your child learn from being involved in a program like WMHFA?

- To play an instrument.
- Discipline
- Confidence
- Teamwork
- Problem solving
- Organization skills
- Responsibility
- Leadership skills
- Ear training
- Performance abilities
- Heightened learning abilities
- Attentiveness
- Their own strengths and weaknesses
- How to handle winning and losing
- What they are capable of accomplishing

West Michigan Home School Fine Arts Association, Inc. holds to the truth that all people, regardless of race, are created in the image of God. Therefore, we will not discriminate against any student on the basis of race, color or national origin. All students are precious to us and will receive just treatment and equal opportunity for advancement.

This page intentionally left blank



*West Michigan Home School
Fine Arts Association, Inc.
7921 Whites Bridge Rd
Belding, MI 48809*

Non-Profit Org.
U.S. Postage
PAID
Belding, MI
48809

Address Service Requested

Questions?

wmhfa@charter.net

Questions by Phone?

(616)794-2332

Visit us on the web!

www.wmhfa.org